

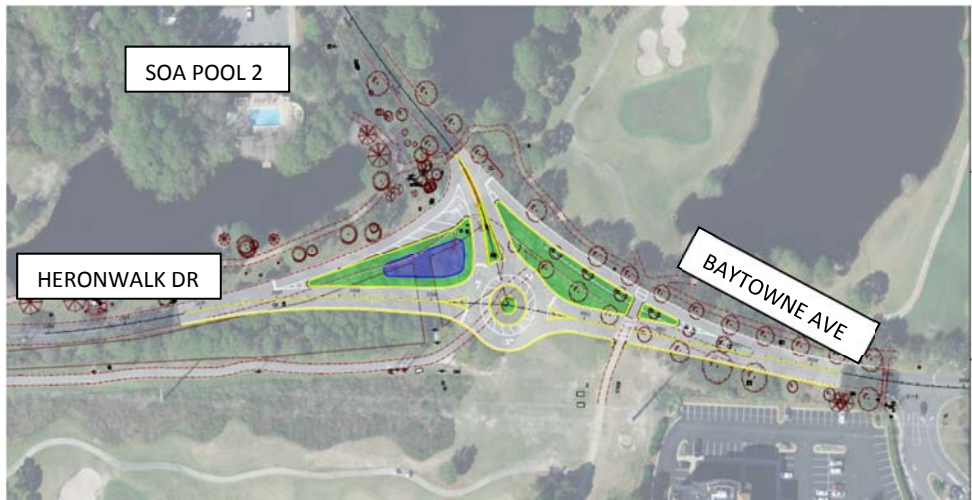
**SOA IMPROVEMENT PROJECTS –  
UNDERWAY, FUTURE, AND RECENTLY COMPLETED  
(Updated 10/19/2018)**

**PROJECTS UNDERWAY**

**BAYTOWNE AVE TRAFFIC CIRCLE**

Board approved \$120K to move forward with engineering firm. Design approved at the May 2 Special Board of Directors meeting.

Update 9/20/18 - Development Order received. Request for Proposal due back October 20. Contractor to be chosen at that time.



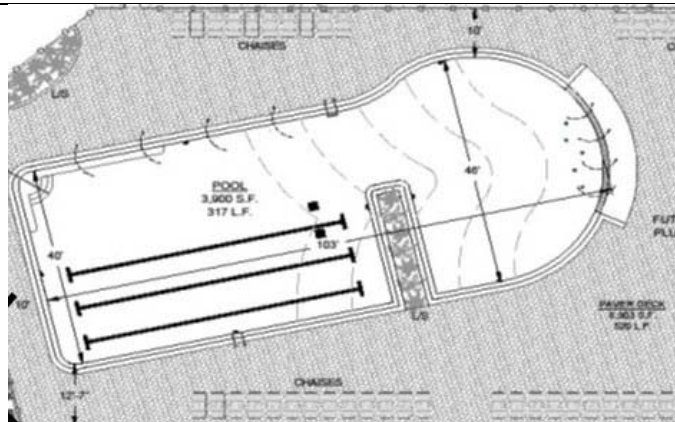
**DESIGN APPROVED ON MAY 2, 2018  
PROJECT PROPOSED TO BEGIN LATE FALL 2018**

**SOA POOL 2 REMODEL**

Pool 2 will be remodeled to include new bathroom and pavilion.

8/16/18 Development Order received – Request for bids are due back early September.

9/20/18 – Board approved \$1.6M for new pool, deck, pavilions, and restrooms. Scheduled to begin once permit received.



**Draft of artist rendering for the new pool area.**



**WEST PERIMETER FENCE**

The Board of Directors approved landscape material be planted along this perimeter in lieu of replacing the fence.

Update 10/18/18 – SDI is researching repairs after storm damage.



**PROPOSED ROADWAY PAVING PROJECT FOR 2018-2019**

**The Board of Directors approved \$625K from Roadway Reserves to pave the following areas:**

- Augusta (All roads)
- Sandestin Blvd S
- Golfview Drive (patching)
- L'Atrium Drive (patching)
- Linkside (patching)
- Turnberry Court
- Portions of Club Drive & Burnt Pine Cove



**PROJECTS RECENTLY COMPLETED**

**MAINTENANCE BOAT RAMP AT HORSESHOE LAKE/BEACHWALK VILLAS**

A boat ramp has been added to the Horseshoe Lake in order to allow staff to access the lake for improved maintenance. Sod, bollards and signage are being installed soon.



**TURNBERRY SIDEWALK AND FOOT BRIDGE - COMPLETE**

Board approved \$92K to repair:

- Sidewalk along Turnberry entry
- Wooden sidewalk "footbridge"
- Turnberry Bridge
- Lighting will be added over next 2 weeks.



**BEFORE**



**BEACH ACCESS PARKING LOT IMPROVEMENTS - COMPLETE**

Project completed May 2018 - \$250K



**BEFORE**



**AFTER**



**CRYSTAL LAKE ISLAND - COMPLETE**

Gazebo recently removed due to safety issues. Board of Directors approved landscape re-design. Landscape installed May 2018.



**BEFORE**

**BAYTOWNE AVE SIDEWALK - COMPLETE**

Sidewalk on Baytowne Ave from club Drive to Bay Pines repaired. Complete in fall/winter 2017



**BEFORE**



**AFTER**

## CRYSTAL COVE – CRYSTAL LAKE BRIDGE IMPROVMENTS - COMPLETE

Improvements done to correct safety issues on the pedestrian bridge between Crystal Lake & Crystal Cove.  
 \$20K  
 Complete March 2018



## SOUTH PUMP STATION WET WELL - COMPLETE

Renovation to the South Pump Station Wet Well to extend its life and improve function. \$70K



## SIDEWALK REPAIRS

The areas of sidewalk listed were repaired in September 2018.

### Sidewalk Repairs - SOA - Phase II

Location	SF
On Sandestin Blvd. North in front of Sandpiper Village. Cut slab in half	40
Under Gulf Power ROW. East of old engineering building, by first wood bridge	336
14' x 8', Under Gulf Power ROW, east of Location 2	112
9' x 9' Behind Sand dollar sign at North traffic circle	81
9' x 13', Baytowne Avenue across from Marriott Courtyard	117
9' x 13', Baytowne Avenue across from Marriott Courtyard	117
20' x 8', Baytowne Ave, near east gate stop sign	160
8' x 10', Baytowne Ave, east of stop sign at east gate	80
9' x 7', In front of 1457 Baytowne Avenue	63
15' x 5', in front of 1800 Baytowne Avenue	75
5' x 7', West of 1800 Baytowne Avenue	35
5' x 24', East of 1540 Baytowne Avenue	120
North side of Baytowne Avenue by crosswalk at Baytowne Lane (by east gate)	45
South side of Baytowne Avenue by crosswalk at Baytowne Lane (by east gate)	21
<b>GRAND TOTAL</b>	<b>1402</b>